



## Grapevine Red Blotch Financial Assistance

The USDA Farm Services Agency has included *Grapevine red blotch associated virus* (GRBaV) as an approved disease for financial relief when replacing infected vineyard blocks.

[Read more](#)

## Lettuce Downy Mildew Resistance Screening

Downy mildew in lettuce is caused by the oomycete *Bremia lactucae* Regel, an obligate parasite that primarily infects the foliage of lettuce plants.

[Read more](#)

## Lettuce Virus Panel – NEW!

Plant Health Services now offers a molecular virus panel for lettuce (CMV, INSV, MPV, TBSV, & TSWV).

## Fall & Winter Grapevine Testing & Consulting

Healthcheck™ Panel A + RB  
Healthcheck™ Fungal Panel  
Fall & Winter vineyard visits

For more information, please e-mail us at:  
[stacoinfo@eurofinsus.com](mailto:stacoinfo@eurofinsus.com)

## Upcoming Events

**November 19<sup>th</sup>**

Webinar on [Grapevine Graft Transmissible Diseases: Management and Control](#) to be held at 11:00 AM PST  
[Click here to register!](#)

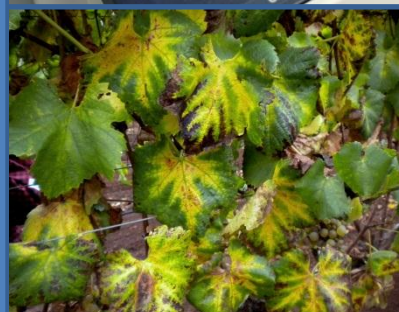
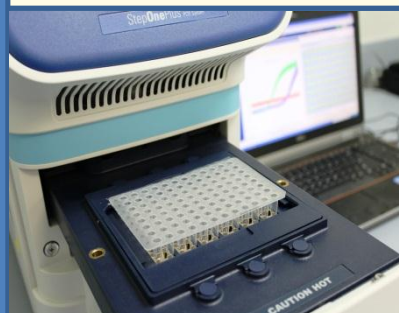
**December 3<sup>rd</sup>**

[North Coast Wine Industry Expo - Booth 147](#)  
Santa Rosa Fairgrounds, Santa Rosa, CA  
We have free passes for this event  
[Click here to register!](#)  
(deadline to register is November 30<sup>th</sup>)

**January 27-28<sup>th</sup>**

[Unified Wine and Grape Symposium](#)  
Sacramento Convention Center, Sacramento, CA  
E-mail: [juditmonis@eurofinsus.com](mailto:juditmonis@eurofinsus.com) for an event pass

**Our lab will be closed on November 27<sup>th</sup> and  
December 24<sup>th</sup>. Happy Holidays!**



**RESULTS YOU CAN TRUST**

Eurofins STA Laboratories, Inc.

7240 Holsclaw Road • Gilroy, CA 95020 • (408) 846-9964

[www.eurofinsus.com/grapevine-testing](http://www.eurofinsus.com/grapevine-testing)